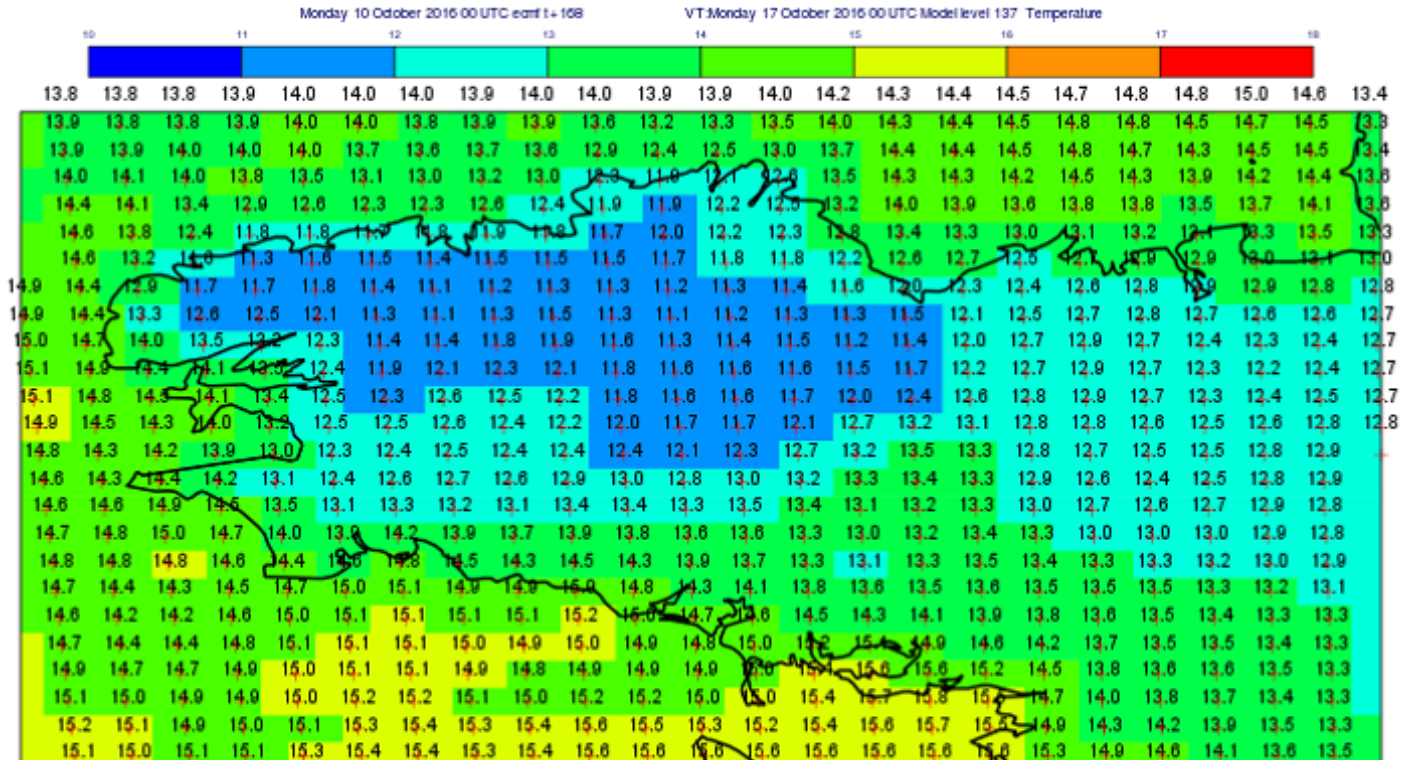


Weather forecasting models

Auteur :

MALARDEL Sylvie, Chercheur confirmé au Centre Européen de Prédiction Météorologique à Moyen Terme (CEPMMT), ingénieur des travaux de la Météorologie.

05-01-2025



This article presents the basic principles of numerical atmospheric modelling. First, it explains how to move from general and continuous equations of fluid mechanics to a discretized version of these equations. Then it shows how they can be translated into high-performance computer programs, the atmospheric models, which calculate the future state of the atmosphere from an initial state constructed using meteorological observations. The atmospheric model is thus the heart of operational numerical weather prediction systems.

1. What is an atmospheric model?

An **atmospheric model** is a computer system that simulates the behaviour of the atmosphere. It is used either as a numerical laboratory to study atmospheric processes and better understand them, or as a tool to help predict weather or climate.

The basic laws that describe the evolution of the state of the atmosphere are those of fluid mechanics. They express **the evolution over time of a fluid (liquid or gas)** from its supposedly known initial state. Their general shape is universal and therefore valid in very different contexts, for example the flow of air around an aircraft, the circulation of water in pipes or rivers, the propagation of sound waves around a wind turbine, or the rise of smoke from a chimney. These equations also make it possible, and this is what we are interested in for atmospheric models, to describe the evolution of the geophysical fluids that are the oceans and the atmosphere.

In the case of the atmosphere, the laws of fluid mechanics are formulated to predict atmospheric parameters such as wind, temperature, pressure and humidity. These are very complex equations because there are many cross interactions between these parameters. These equations also involve processes at very different scales, from the **scale of the planet to that of the raindrop**, as well as interactions with the underlying surface (land, sea, vegetation cover, see [Biosphere, hydrosphere and cryosphere models](#)) and space. Their extreme complexity, due in particular to their non-linearity, precludes their analytical solution. The

only way out is therefore to **use approximate numerical techniques** to calculate the evolution of an initial state. This initial state, called **analysis**, is itself manufactured using highly sophisticated mathematical and numerical methods **for assimilating** atmospheric observations (see [Assimilation of Meteorological Data](#)).

The atmospheric fluid is essentially a gas composed of dry air (20% oxygen, 80% nitrogen) and water vapour. Other gases such as ozone or carbon dioxide are present with very low concentrations (see [The Earth's Atmosphere and Gas Envelope](#)). However, these minority gases play an essential role in the energy balance of the atmosphere. In the layer where most weather events occur, the troposphere, temperature and pressure conditions can lead to phase changes in the water. **Water vapour can thus be transformed into liquid or ice condensates** which constitute **clouds and precipitation**. However, taking into account these phase changes, phenomena with very non-linear thresholds and therefore difficult to translate into equations, is essential to correctly model the behaviour of the atmosphere.

In the context of **numerical weather prediction (NWP)** (see [Introduction to Weather Forecasting](#)), the atmospheric model is one of the links in the "data assimilation - calculation - forecasting" cycle implemented in operational forecast centres. It must not only produce good quality forecasts, but also be fast and robust in order to produce the information needed by forecasters on time and without fail.

2. The equations of fluid mechanics

The Euler system of equations, which expresses **the fundamental principles of fluid mechanics and thermodynamics**, forms the basis of an atmospheric model. These equations do not apply to a gas molecule but to **a parcel of air**. It is assumed to be both large enough to contain enough molecules for statistical parameters such as temperature and pressure to be defined and small enough to be assimilated to a point in the vastness of the atmospheric environment.

This system contains three main equations:

The **mechanical equation** that expresses the acceleration of the motion of an air parcel as a function of the forces applied to it. In a horizontal plane, this equation gives the wind acceleration as a function of the pressure forces and the Coriolis inertial force due to the Earth's rotation. On the vertical, the acceleration of the movement is controlled by gravity and by Archimedes' force.

The **total energy conservation equation** which, combined with the equation for kinetic energy deduced from the equation of motion, provides an equation for temperature (or another quantity derived from temperature such as enthalpy or entropy). In particular, it describes the effects on temperature of solar radiation, infrared radiation emitted by the Earth or clouds, and those associated with any change in water status (evaporation cools, condensation heats up).

The **mass conservation equation** that ensures the conservation of the different components of an air parcel.

To these three equations, we add the gas state equation which links the three thermodynamic parameters, temperature, pressure and density as well as the thermodynamic laws describing the phase changes of water.

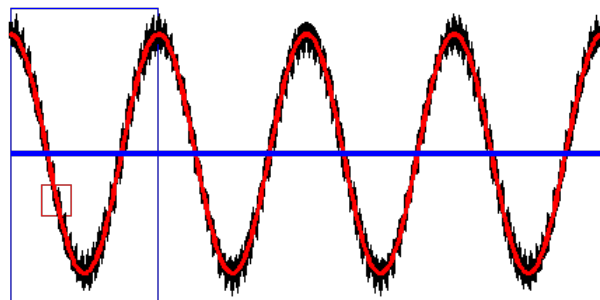


Figure 1. Illustration of the notion of filtering by an average operator: the black curve represents a solution of the Euler equations that contains both large scale variations and very small scale variations. The blue curve represents the average solution over large blue volumes. We see that if we choose to sample the solution with these large volumes, we lose all information on the variability of the solution. If we average on smaller volumes, for example here, the red volumes, we filter the small variations present on the black curve, but we keep the large scale variations (red curve)

Euler's **equations** are able, for example, to describe each small vortex in the vicinity of the Earth's surface or each diversion of

air currents around an obstacle. But the capacity of the computers that will allow us to solve these equations is not yet sufficient to calculate, in practice, the evolution of all these small details. It is therefore necessary to simplify Euler's equations in order to keep only the essential terms for meteorology. The first step in simplification is to **average** the original equations in **time and space** in order to filter the fast and small-scale spatial processes that cannot be described. As a result of this averaging operation, atmospheric parameters such as wind or temperature that are predicted by the equations no longer represent the wind or temperature of a small parcel of air but the average of these parameters in a volume large enough to contain a large number of small eddies and small enough that the averaged parameters still contain the variability necessary to describe the weather phenomena that are to be predicted (Figure 1).

In a second step, the order of magnitude of each of the terms of the equations is analyzed in order to eliminate those that become negligible at the scales still described by the average equations. For example, a classic approximation in atmospheric models is **the hydrostatic approximation**, which neglects vertical acceleration in the vertical equation of motion. The remaining terms in the equation - gravity and Archimedes' force - must then balance each other. Consequently, the mean parameters described by the hydrostatic equations (also known as **primitive equations**) are, by construction, always in **hydrostatic equilibrium**. In other words, in such a model, the adjustment to hydrostatic equilibrium is treated as a very fast process that is - filtered by the spatial and temporal means applied applied to the equation - then no longer explicitly described by these equations. Hydrostatic equations in particular no longer represent the vertical propagation of acoustic waves, which are so fast that they have little direct interest in meteorology. Their filtering is also an advantage for the stability of numerical models (see section 3). The hydrostatic approximation is valid as long as the atmospheric parameters are averaged in volumes with a horizontal section greater than a few kilometres. However, for finer representations, it may become important to explicitly describe non-hydrostatic transient processes.

The filtering operation, if it removes the possibility of solving every small detail of the atmospheric fluid by the equations, leaves the possibility of representing the collective influence that these fluctuations have on the mean fields. This possibility is particularly important to take into account exchanges with underlying land surfaces (link to article Biosphere, hydrosphere and cryosphere models), which involve very fine and rapid turbulent scale processes. Statistical regression laws that have been established and validated by experience make it possible to link the collective effect of small eddies and micro-circulations in the first few hundred metres above the surface to the average evolution of wind, temperature and humidity in this layer. These statistical laws are the basis for small models, integrated into the global model, called **physical parameterizations**.

The **phase changes** of water vapour into droplets or ice crystals that can then evaporate or melt cannot be explicitly described by the averaged equations. To represent them, again, it is necessary to adopt **another family of parameterizations** based on statistical descriptions of the behaviour of populations of drops or crystals called **cloud microphysics schemes**.

The modeler has an additional difficulty to represent clouds that are too small to be created by ascents due to the average vertical velocity. Specialized parameterizations to describe clouds of low horizontal extension such as cumulus or cumulonimbus address both vertical velocity fluctuations and water phase changes. These parameterizations, known as **convection schemes**, are one of the key elements to correctly represent energy exchanges in tropical regions and thus ensure that climate balances are maintained in the model.

It is also necessary to set up all the interactions between the atmosphere on the one hand and, on the other hand, the solar radiation coming from space and the infrared radiation which is mainly emitted by the earth's surface. These effects must be greatly simplified to make the **parameterization of radiation** compatible with the constraints of forecast production in the operational centres.

In general, atmospheric system modellers separate the terms of the equations that are expressed directly as a function of the average parameters in a subsystem, called **dynamics**, from the terms that require the development of parameterizations placed in a second subsystem called **physics**. It is the coupling between these two subsystems that constitutes an atmosphere model.

3. Discretization and digital algorithms

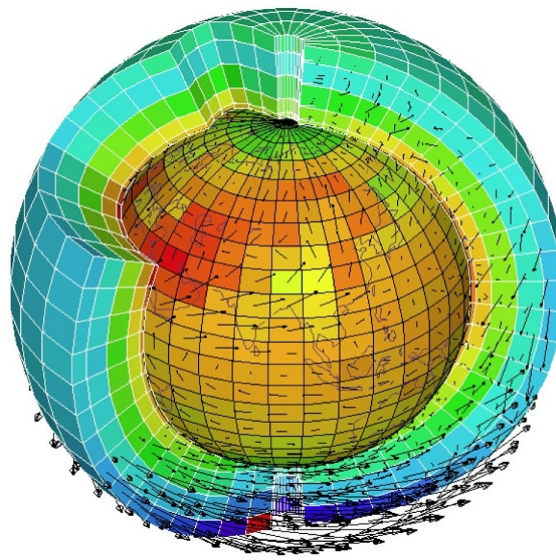


Figure 2. Schematic representation of the discretized atmosphere on the horizontal and vertical. [Source: Illustration by Laurent Fairhead, Laboratoire de Météorologie Dynamique, Paris]

The numerical diagrams that solve the system of averaged equations are based on a discrete representation of the atmosphere. They make it possible to calculate the successive states of the atmospheric parameters defined within each **mesh** of a three-dimensional grid (Figure 2). The mesh size defines the horizontal and vertical **resolutions** of the model and must be consistent with the characteristic scale of the average operator that has been applied to the equations.

The equations are not solved independently for each mesh. Indeed, the expression of horizontal and vertical variations of the various quantities as well as that of the transport of these quantities by the wind, involve values in the neighbouring meshes. Parametrizations, on the other hand, often involve calculations along all the meshes of a vertical column (to describe, for example, the rainfall or the turbulent upward transport of water vapour that evaporates at the ocean surface).

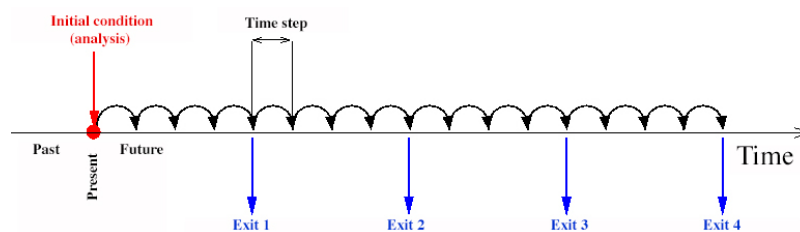


Figure 3. Schematic representation of discrete temporal evolution in a numerical prediction model. At the beginning of the execution, the model is initialized with the analysis that was produced by the data assimilation. The model then calculates the evolution of this initial condition over a time step (for example, at the ECMWF, the time step of the high-resolution model is 7.5 minutes). The result of the calculation after a time step is used to calculate the evolution during the next time step and so on. The state of the atmosphere predicted by the model is stored at certain times, every hour, 3 hours or 6 hours depending on the models.

The discretization of the equations does not only occur in space but also in time. The **time step**, which is the time equivalent of the mesh size in space, separates two successive estimates of the state of the atmosphere by the model (Figure 3).

Numerical schemes, even the most sophisticated ones, are methods of approximate resolution whose solution converges on the exact solution when the spatio-temporal resolution of the model becomes very fine. For this reason, the resolution of the models increases as the capacity of the computers increases.

It must be ensured that **the error level** remains **stable during the simulation**. Some numerical schemes can indeed see their error grow very quickly if certain conditions are not met. A classical stability constraint, known as the Courant-Friedrich-Levy condition or **CFL condition** [1], specifies that the wind in a mesh must not carry the air present in that mesh more than the size of a mesh in a single step of time. If this condition is not verified in the scheme, the error increases until it reaches infinitely

large numbers, the scheme becomes unstable, it is said that the model explodes.

Many modeling schemes have been proposed in the past and new ones are still published every year. The difficulty for the modeler is to make the choices that allow the **best compromise between precision, stability and efficiency in computation time**. These choices are not independent of the architecture of the computer that will be used.

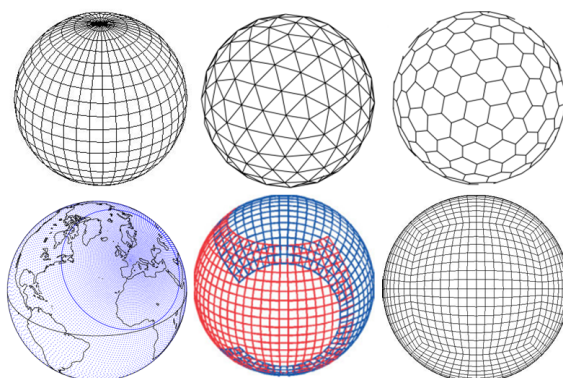


Figure 4. Example of horizontal grid types used by atmospheric models: regular latitude/longitude grid currently used, for example, in the Met. Office in the United Kingdom, triangular grid of the ICON model in Germany, hexagonal grid, Gaussian grid tilted and stretched of the ARPEGE model of Météo-France, Yin-Yang grid used in Canada, cube-sphere grid.

Even if all models are based on the same system of equations, in practice, each implementation can vary widely from one model to another. On the horizontal, there is a wide variety of possible mesh sizes (Figure 4) ranging from a simple regular grid along circles of latitude and meridians to grids with hexagonal or triangular meshes. Some stranger meshes, such as the cube sphere or the Yin-Yang grid, have interesting mathematical properties, in particular, they do not present any singularity at the poles. In some cases, the type of grid is imposed by the chosen numerical method. The **global model of Météo-France and the model of the European Centre for Medium-Range Meteorological Forecasting (ECMWF)** use a mathematical transformation that projects the parameter fields on the basis of mathematical functions, the spherical harmonics. For this transformation to be accurate, it is necessary to use a Gaussian grid [2]. In Météo-France, the grid is also stretched to increase the resolution over France.

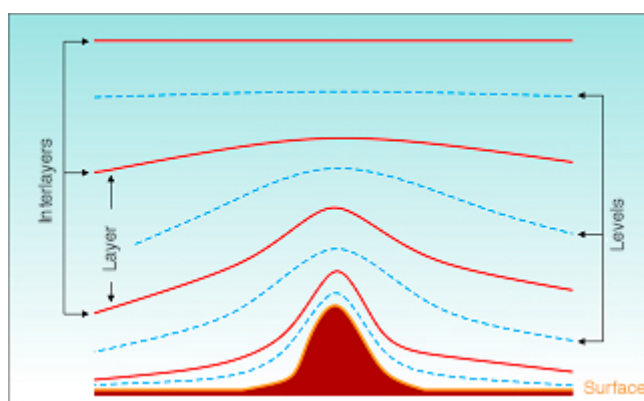


Figure 5. Diagram showing a common example of vertical discretization of the atmosphere. The levels where the average parameters calculated by the model are positioned are drawn in blue. These levels follow the terrain when they are near the surface and become horizontal at higher elevations. The parameters calculated on the levels of the model represent an average value in a layer, limited on this diagram by red lines (See ref.[3]) [Source: Malardel, 2009.]

In the vertical direction, some models divide the atmosphere with levels defined with height, others use pressure to define the vertical mesh. Often, the levels are not strictly horizontal but follow the shape of the orography, at least in the lowest layers of the model (Figure 5).

In addition to **global models** that produce forecasts for the entire atmosphere and that also often have a version used for

long-term forecasts, such as seasonal or climate forecasts, **there are many regional models** that computation only for a given region. The reduction in the number of calculation points in these limited area models allow an increase in resolution and a better optimization of the tuning for this region. One of the limitations of regional models is the need to couple the solution on the edges of the limited domain with the solution provided by a lower global resolution model. Coupling techniques are important sources of errors that spread within the area of interest and thus limit the duration of this type of forecast.

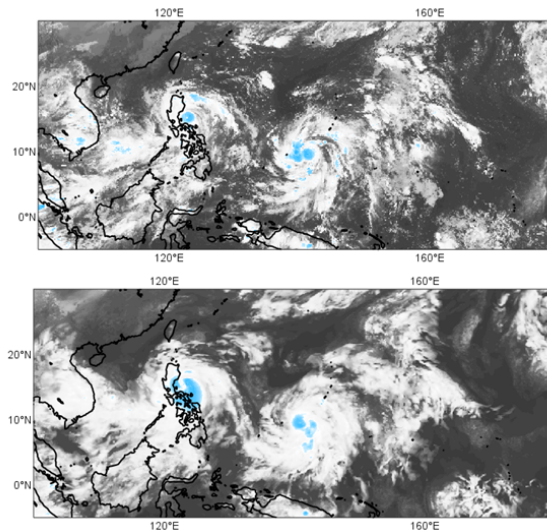


Figure 6. Comparison between an image produced from satellite observations of 15 October 2016 at 12 GMT (top figure) and the corresponding synthetic image produced from the 12-hour maturity forecast of the ECMWF model.

The fields provided by the model are not stored at each time step but only for the forecast times required by the users. The raw parameter fields such as temperature, wind or geopotential height are interpolated to the isobaric levels conventionally used by forecasters. Cloud cover and surface precipitation are provided directly by the cloud parameterizations. Many other parameters are diagnosed from the model's raw outputs to help the forecaster analyze the behaviour of the atmosphere and compare the predicted states with new observations that arrive in real time. Maps of surface parameters such as temperature at 2 m above the surface, wind at 10 m above the surface, gusts, but also satellite images or synthetic radar images (Figure 6) are thus routinely processed. Model outputs are the main information that is made available to expert forecasters (see [The Role of the Forecaster](#)). They use it to produce the best general scenario for the weather evolution in the coming days and the necessary refinements for each region around the globe.

4. The challenge of computer programs and supercomputers

The forecasting models which are operational in 2016 include **several million meshes, about ten variables per mesh and time steps of a few minutes**. They require the solution of more than **100 million complex equations to produce a single hour of forecast**. Only the use of the most powerful computers, but also efficient algorithms, can produce forecasts quickly enough to be transmitted to forecasters in a time.

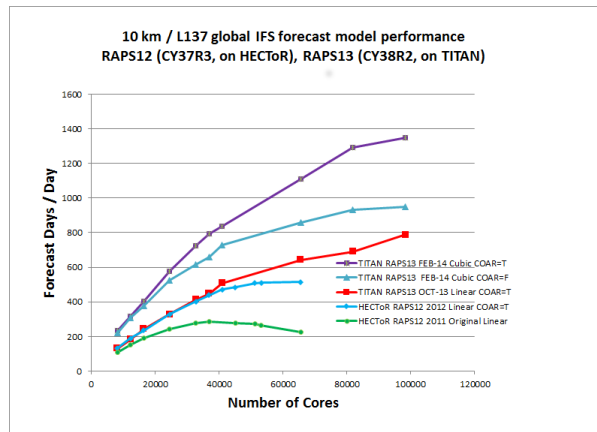


Figure 7. Curves showing an example of a benchmark for a configuration of the ECMWF model corresponding to a horizontal resolution of 10 km and 137 vertical levels [Source: G. Mozdzynski, ECMWF]. The different curves give the maximum number of forecast days that can be performed by the system depending on the number of processors used on the HECToR and TITAN supercomputers and for different system configurations. Currently, the operational constraint is to produce 10 days of forecast in less than one hour, or at least 240 "days/day". The green curve shows that, on the Hector ECU and with the 2011 system, the system parallelization is far from optimal because performance is not increased (or even decreased) when the number of processors increases. The purple curve shows a significant improvement in the system's performance in terms of parallel computing.

One of the keys to rapid computing is to be able to distribute the calculations in order to **make the different processors of a supercomputer work in parallel**. And this parallelization must be done with minimal communications between processors because these communications are often much slower than the local computing capabilities of the processors. These constantly evolving technological constraints require modelers to constantly adapt numerical schemes to the new specificities of the supercomputers. Comparative tests are regularly carried out to evaluate the efficiency of the models in terms of computation speed (Figure 7) both for current computer technology and in projection for possible future technologies.

An **atmospheric model** is therefore finally a **computer code** of several million lines, developed and maintained by dozens of people in parallel. It is the heart of the data assimilation and high-resolution forecasting cycle in operational weather forecast centres. It is also used to produce the perturbed forecasts of each member of the ensemble forecast (see [The ensemble forecasting](#)). Coupled with an ocean model, it is used for monthly and seasonal forecasts and to monitor climate change (see [The Seasonal Forecast](#)).

Numerical modelling of the atmosphere has had to and must continue to cope with:

- increases in resolution and therefore in the number of calculations,
- increases in the processes to be described (e.g., addition of atmospheric chemistry),
- increases in the number of processors in the ECUs,
- increases in power consumption of supercomputers,
- increases in the number of program lines,
- increases in the mass of data to be processed and stored at the output.

An important challenge in the coming years is to **improve the scalability of** existing models, i.e. their ability to adapt to all these increases, while remaining tools that can still be used by all researcher-developers and are still useful for weather forecasting applications.

References and notes

Cover image: Forecast of temperatures over Brittany on 10 October 2016 for 17 October 2016 at 00 GMT using the ECMWF digital model (black figures: temperatures in °C; red crosses: mesh centres).

[1] J. Coiffier : Éléments de prévision numérique du temps, "Cours et Manuel", 1997, Météo-France.

[2] S. Malardel, N. Wedi, W. Deconinck, M. Diamantakis, C. Kuhnlein, G. Mozdzyński, M. Hamrud, P. Smolarkiewicz : A new grid for the IFS, 2016, ECMWF Newsletter 146.

[3] S. Malardel : Fundamentals of Meteorology, 2nd ed., 2009, Cépadués éditions.

L'Encyclopédie de l'environnement est publiée par l'Université Grenoble Alpes - www.univ-grenoble-alpes.fr

Pour citer cet article: **Auteur** : MALARDEL Sylvie (2025), Weather forecasting models, Encyclopédie de l'Environnement, [en ligne ISSN 2555-0950] url : <http://www.encyclopedie-environnement.org/?p=6876>

Les articles de l'Encyclopédie de l'environnement sont mis à disposition selon les termes de la licence Creative Commons Attribution - Pas d'Utilisation Commerciale - Pas de Modification 4.0 International.
