

# Tropical Cyclones: impacts and risks

Auteur :

ROUX Frank, Professeur à l'Université Paul Sabatier, Laboratoire d'Aérodynamique, Toulouse

05-01-2025



*As the ruins of Tacloban in the Philippines show, after the passage of Typhoon Haiyan in November 2013, cyclones, together with earthquakes, are the most devastating natural phenomena. Specialized meteorological services monitor them around the world to warn the populations concerned of the associated risks. But we still have to be well prepared for these terrible deadlines.*

## 1. Impacts of tropical cyclones

Every year, cyclones, typhoons and hurricanes affect **dozens of countries** around the world. Losses of life and material damage are significant due to strong winds, heavy rains, large swells and storm surges. Hazardous phenomena are not only located on islands and coasts. Even mitigated, hurricanes often cause damages inland, through floods and landslides, sometimes hundreds of kilometres from the ocean.



*Figure 1. Flooding around the Karnaphuli River in Bangla Desh after the April 1991 cyclone.*

Over the past 50 years, **nearly one million people** have died in tropical cyclones. The cause is the increase in populations in exposed areas, due to the attraction of the sun in rich countries, population growth elsewhere. In developed countries, the **loss of human lives has decreased significantly** as a result of improved forecasts. But at the same time, the **average cost of devastation has risen sharply**. The record is held by Hurricane **Katrina**, whose passage over New Orleans in August 2005 left a bill of **at least €100 billion**. In terms of human lives, the most affected regions were **Bangladesh** with the two hurricanes of November 1970 and April 1991, each claiming more than 200,000 lives, **Honduras** and **Nicaragua** with Mitch in October 1998, **Burma** in 2008 with Nargis ravaging the Irrawaddy Delta, the **Philippines** with Hayan in 2013, each causing tens of thousands of deaths.



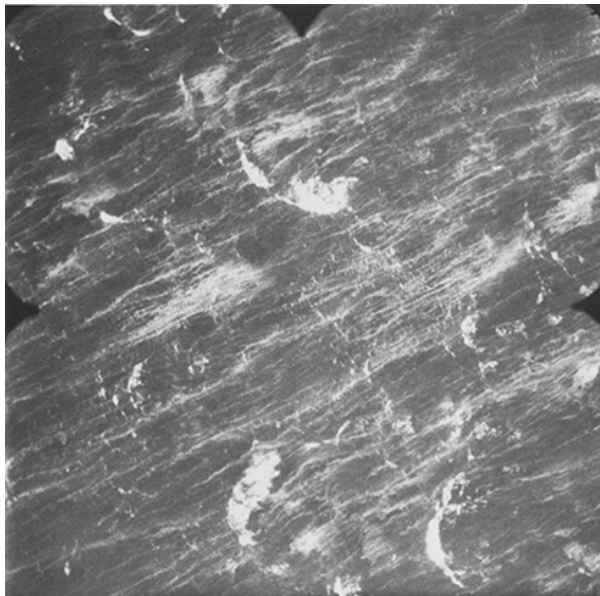
*Figure 2. Cleaning of the streets of Tegucigalpa after the landslides caused by Hurricane Mitch in October 1998. [Source: <http://s.hswstatic.com/gif/worst-hurricanes-10.jpg> ]*

The moisture collected by the wind on the ocean surface condenses to form **precipitation**. Within a radius of about 100 km around the eye, the accumulated rain amount is about ten centimetres per day, but values five to ten times higher are not uncommon for intense events, and in certain regions such as the eye wall or on mountainous areas. The **arrival on land**, whose surface is rougher than that of the ocean, causes a **slowing of the wind** and a **strong convergence** in the cyclone quadrant that approaches the coast. This makes upward movements more intense, accelerates moisture condensation and **increases precipitation**. In general, the **eyewall** weakens quite quickly after landfall. On the other hand, the **external bands** are more resistant to this transition and are often responsible for heavy rains inland.



*Figure 3. Flooding in New Orleans after Hurricane Katrina in August 2005.*

**Hurricane winds** are among the most powerful on Earth. Below the eyewall, they often exceed 200 km/h and can reach 350 km/h. Only tornadoes produce stronger winds, but on smaller scales and for shorter periods of time. The distribution of winds is rarely symmetrical: they are often **more intense on the right** (resp. **left**) of the cyclone with respect to its displacement in the **northern** (resp. **southern**) **hemisphere**. When a cyclone passes, debris of all sizes carried by the wind becomes projectiles that hit everything exposed. However, it is not the sustained winds that cause the most damage, but rather **variations in intensity and direction** that weaken the structures. Variability increases inland as **topography** generates small-scale (a few kilometers) and locally more intense circulations.



*Figure 5. Ocean surface with white scum and spray trails under conditions of strong cyclonic winds. [Source: After [http://www.tudelft.nl/uploads/RTEmagicC\\_atlas09e\\_02.jpg](http://www.tudelft.nl/uploads/RTEmagicC_atlas09e_02.jpg) ]*



Figure 4. The city of Darwin, in northern Australia, devastated by Cyclone Tracy at Christmas 1974. [Source: [https://s.yimg.com/ea/img/-/140824/cyclone\\_tracy\\_19vivve-19vivvs.jpg](https://s.yimg.com/ea/img/-/140824/cyclone_tracy_19vivve-19vivvs.jpg) ]

The ocean surface reacts to cyclonic winds by forming a **swell** whose amplitude can reach ten metres. Its direction changes with the direction of the wind that rotates around the eye and, when the cyclone moves, it generates dangerous **cross swells** resulting from the superposition of waves generated by winds coming from different directions. When the wind blows at more than 200 km/h, the amount of **spray** becomes such that a kind of **moisture-saturated fog** invades the tens of metres above the surface. This buffer zone, between the ocean and the atmosphere, plays an important role in the evolution of intense cyclones, reducing surface friction and limiting energy exchanges between the two environments.

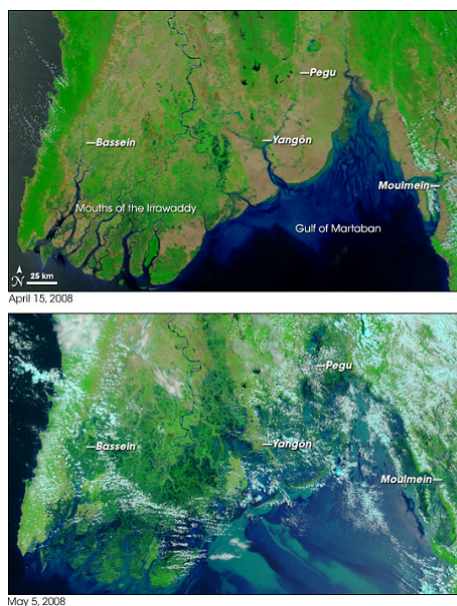


Figure 6. Invasion of the Irrawaddy Delta (Burma) by the sea during Cyclone Nargis (May 2008). [Source: NASA Earth Observatory]

In **deep waters**, the friction caused by wind and central depression leads to a **relatively low elevation** of the ocean surface, at most a few tens of centimetres. But in the **shallow costal waters**, this causes a rapid and sharp rise in water level, the "**Storm Surge**" that breaks out like a tsunami. Its amplitude is maximum on the right (left) of the displacement in the northern hemisphere (south). It is 1 to 2 metres for light cyclones, but it can exceed 10 metres for the most powerful ones. The superposition of the storm surge and the astronomical tide produces the "**Storm Tide**". Focusing by bathymetry and reflections from the coast can locally increase the amplitude of this exceptional tide. Depending on the topography of the area, seawater can penetrate inland for several tens of kilometres.

## 2. Tropical cyclone forecasting

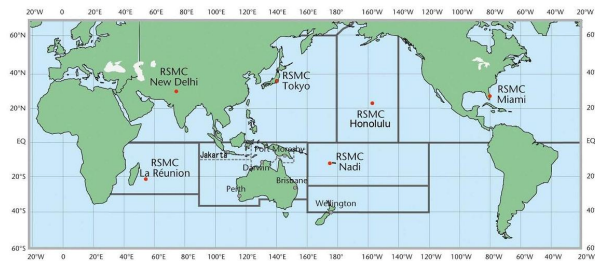


Figure 7. Distribution of Regional Meteorological Centres Specialized in tropical cyclone monitoring and forecasting (in English RSMC) [Source : [blog.metservice.com/](http://blog.metservice.com/). [This information is made freely available by MetService. Despite this, MetService is not associated with, and does not endorse, Encyclopédie de l'environnement or have involvement in how this information is presented) ]

WMO has allocated responsibility for cyclone monitoring and forecasting. Five " **Regional Specialized Meteorological Centres**" (RSMCs) provide trajectory and intensity forecasts in their areas of responsibility. The RSMC of **Miami** (United States of America) is in charge of the North Atlantic and the eastern North Pacific; the one of **Reunion Island**, under the responsibility of Météo-France, monitors the events in the southwestern Indian Ocean; **New Delhi** (India) focuses on those in the Arabian Sea and Bay of Bengal; **Tokyo** (Japan) follows typhoons in the western North Pacific; disturbances in the southwest Pacific are under the control of **Nandi** (Fiji) and those in the central North Pacific are followed by **Honolulu** in Hawaii. Surveillance of the southeast Indian ocean and northern Australia is spread over several centres in Australia, Indonesia and Papua New Guinea. A name is assigned by the appropriate RSMC to any disturbance that reaches tropical storm status. Names - most often alternately male and female first names - are taken from pre-established and regularly updated lists, removing those of the most devastating cyclones.

Predicting the **trajectory and evolution** of cyclones is the main task of the CMRS. Thanks to improved **observations** and **numerical models**, the average statistical error has decreased by about 1% per year in recent decades. The uncertainty about the position of the centre of a cyclone, derived from satellite images, is a few tens of kilometres. With regard to forecasts, uncertainty is increasing by about 100 kilometres per day of the forecast period. The position of a cyclone at **24, 48 or 72 hours** is therefore only expected within margins of about **100, 200 or 300 kilometres**. These are only average values and the reliability of forecasts varies according to cyclones and their environment. In addition, a few large errors often have a much stronger impact on the public than the more correct forecasts. It is difficult to predict slower and more erratic trajectories. Progress in **predicting the intensity** of cyclones - **wind** strength, amount of **precipitation**, **wave** and **tidal** amplitude - is more limited due to the complexity of internal processes and interactions with the environment.

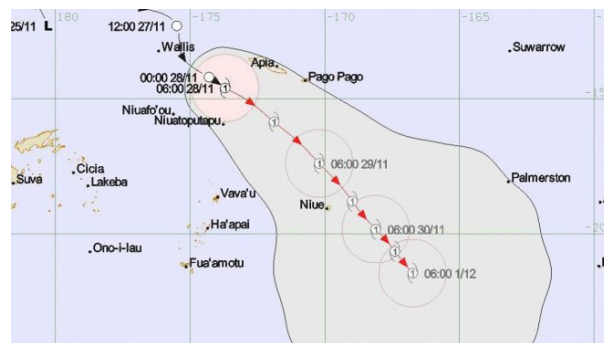


Figure 8. Forecast of the trajectory of tropical cyclone Tuni by the Australian Meteorological Service on 28 November 2015. The grey area indicates the increasing margin of uncertainty at successive maturities. [Source: <http://la1ere.francetvinfo.fr/nouvellecaldonie/2015/11/29/cyclone-tuni-aux-samoa-inondations-et-glissements-de-terrain-310405.html>]

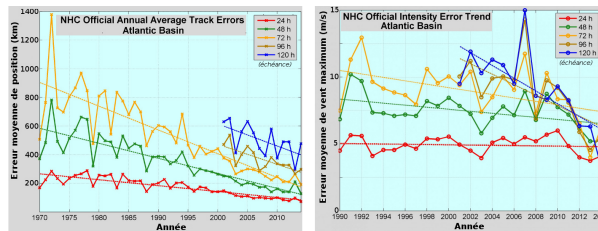


Figure 9. Evolution of average annual errors at the various times of the position of the cyclones (left) and their intensity (right). [Source: <http://www.nhc.noaa.gov/> ]

### 3. Risk prevention



Figure 10. Damage caused by the passage of the powerful cyclone Hugo over Guadeloupe on 17 September 1989. [Source: According to <http://www.guadeloupe.franceantilles.fr/actualite/education-sante-environnement/dossier-cyclone-en-guadeloupe/>].

Cyclone monitoring is probably the area where weather forecasting has the most significant economic and social consequences. A crucial aspect concerns the **transmission of meteorological information** (observed state of the cyclone, expected trajectory and evolution) to the security authorities and the public. **Warning procedures** must have been well defined in advance, including the different levels leading to graduated reactions from the authorities and the population. The interruption of economic and civil activities, the accommodation of displaced persons, the provision of emergency relief and the subsequent restoration of services are major operations in terms of cost and social impact. It is therefore necessary to avoid both the underestimation of risks with potentially dramatic consequences and the overestimation of warnings that erodes the confidence that populations and officials have in forecasts.



Figure 11. Parcel of cryptomerias devastated by the passage on Reunion Island of Cyclone Dina on 22 January 2002 in Reunion Island. [Source: <http://www.onf.fr/la-reunion/sommaire/onf/connaître/environnement/> ]

Several French overseas departments and territories are exposed to cyclonic risk: **Guadeloupe** and **Martinique** in the West

Indies, **Reunion Island** in the Indian Ocean, **New Caledonia** and **Polynesia** in the Pacific. On these islands, it is not possible to evacuate populations far from threatened areas. The focus is on the protection of people and property. The "**Specialised Cyclone Emergency Plan**" defines the responsibilities in terms of information and mobilisation of specialised services. Its implementation is decided and managed by the State representative (prefect in the departments, high commissioner in the territories) on the basis of observations and forecasts from the local Météo-France office.

After a hurricane event, devastation requires **rapid action and significant state support**, which is only possible with some effectiveness in developed countries. Elsewhere, the scars left by a cyclone can last for years. The **considerable damage** that must be reimbursed can put insurance companies in difficult situations. Given the scale of the claims (hundreds of millions to tens of billions euros), these companies also **reinsure** themselves with other companies. Through a game of financial dominoes, the passage of a cyclone over a tropical country can trigger **economic storms** in the quieter markets of London, Zurich, New York or Tokyo.

---

## References and notes

Cover photo: [www.commondreams.org](http://www.commondreams.org)

---

L'Encyclopédie de l'environnement est publiée par l'Université Grenoble Alpes - [www.univ-grenoble-alpes.fr](http://www.univ-grenoble-alpes.fr)

Pour citer cet article: **Auteur** : ROUX Frank (2025), Tropical Cyclones: impacts and risks, Encyclopédie de l'Environnement, [en ligne ISSN 2555-0950] url : <http://www.encyclopedie-environnement.org/?p=6960>

Les articles de l'Encyclopédie de l'environnement sont mis à disposition selon les termes de la licence Creative Commons Attribution - Pas d'Utilisation Commerciale - Pas de Modification 4.0 International.

---