

# Plants water needs

Auteur :

**ITIER Bernard**, Directeur de recherche Honoraire INRAe, UMR ECOSYS, Thiverval-Grignon, Membre de l'Académie d'Agriculture de France

05-01-2025



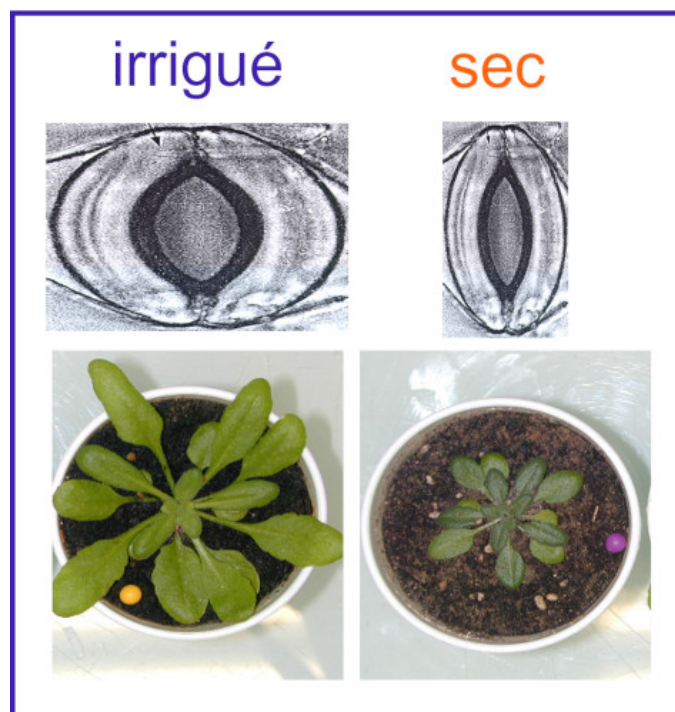
*Water is essential for plant growth. If there is a lack of rainwater*

*-particularly in the perspective of climate change- what can man do to ensure the plant production necessary for his food? There are two possibilities that can be combined: (i) provide the necessary additional water via irrigation and/or (ii) adapt the choices of crops and cultivation practices to the possibilities of the environment. In the first case, he will have to take into account the local availability of water resources and the compatibility of his withdrawal with other uses of aquifers and watercourses. In the second case, he will have to focus his efforts to adapt his farming techniques the lack of water which is, the weak link in his farming system. This will lead him to accept a decrease in production to make it compatible with the potential of the environment.*

## 1. Evapotranspiration, a doubly necessary process

To grow, **plants** - whether cultivated or not - **need water**. Indeed, to fix the carbon necessary for photosynthesis, the pores located on the surface of the leaves, called **stomata**, must be open. This allows carbon dioxide from the air to enter the leaf and be transformed into sugars (see [Shedding light on photosynthesis](#) & [The path of carbon in photosynthesis](#)).

This opening of the stomata puts the water constituting the tissues in contact with the air and causes its evaporation.[\[1\]](#)



*Figure 1. Aspects of a stomata (top) and a potted Arabidopsis plant (bottom) growing under different water conditions. The plant on the left grows on well-watered soil while the plant on the right "survives" on parched soil. The plant on the left has well opened stomata which let in CO<sub>2</sub> from the air. The plant on the right has closed stomata that protect it from water loss but prevent the entry of CO<sub>2</sub> necessary for growth [Source: © François Tardieu, reproduced with permission of the author].*

To grow, a plant must therefore be able to lose water by **evapotranspiration** (ET<sub>a</sub>, with a for actual). This water will come from the soil through a cascade of water potentials (see [The tireless quest for water by plants](#)) (it is commonly said that it is extracted by the roots). So, either (i) there is enough water in the soil and the plant grows without restriction or (ii) the water in the soil is scarcer and the plant will gradually close its stomata. This closure allows the plant to survive without drying out but the plant does not grow anymore because it does not have any CO<sub>2</sub> for photosynthesis. (Figure 1) [\[2\]](#)

Evapotranspiration is therefore a **necessary loss of water** for all vegetation. For a surface covered by vegetation (Figure 2), this evapotranspiration is the **sum of**:

**water vapor transpired** by plants through stomata (noted Tr) ;

**direct evaporation from the soil** (noted E) which is generally low compared to Tr.

The evapotranspired water **comes from the soil explored by the roots**. The soil is supplied with water by rain. If the surface is slightly sloped, some of the rainwater may run off. If the soil moisture is above a threshold called "**field capacity**", the excess water percolates down, replenishing the **water table** (or aquifer). Between two rains events, the soil moisture decreases. If the soil becomes too dry, the plants reduce their transpiration, and thus the ET<sub>a</sub>, and this corresponds to the situation of the deficit pot in Figure 1.

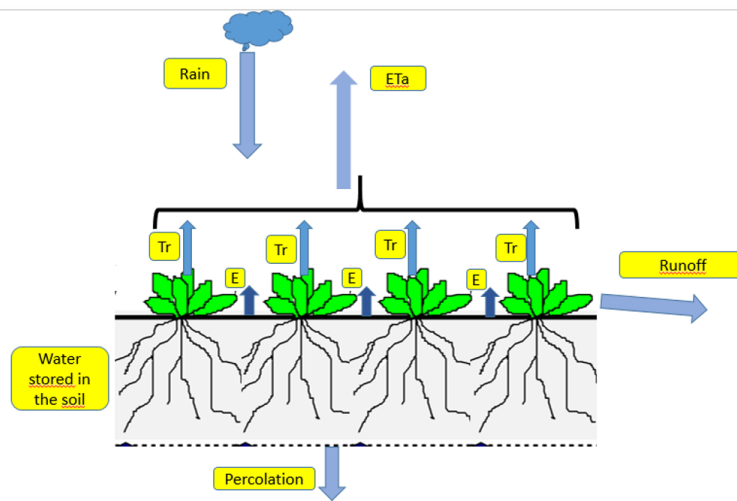


Figure 2. Schematic of the water balance of a soil covered by vegetation. The water in the soil explored by the roots is brought in by rain. It is removed by evapotranspiration, runoff, and percolation to the water table. [Source: Author's diagram]

At the regional scale under temperate climate for land covered with vegetation, natural or cultivated, evapotranspiration represents *roughly* 2/3 of the annual rainfall. Thus, for France, where annual rainfall is close to 900 mm (plains and mountains combined), about 600 mm of rainwater is returned to the atmosphere through evapotranspiration. This is called "green" water because it allows vegetation to function. The remaining 300 mm will percolate to the water table or run off the ground. This is the "blue" water that is available for all other uses (fishing, domestic, recreational, energy, industrial and even... agricultural). [3]

This consumption of 2/3 of the rain by evapotranspiration is not only useful for the production of vegetation (and the associated carbon storage!), it is also absolutely **essential for a climatic reason**. Indeed, the change of state of the liquid water in the cell tissues towards the vapor water of the atmosphere is performed through a consumption of heat, called **latent heat**. This one is substantial since it takes 600 calories per gram of evaporated water ( $2,4 \cdot 10^6 \text{ J/Kg}$ ) (see Focus [Transpiration and heat protection](#)). On an annual scale, this represents an energy consumed equivalent to 2/3 of the radiation balance of all wavelengths. This allows us to have a temperate climate in contrast with desert regions which have summer temperatures above 40°C. This is more evident today with the occurrence of heat wave droughts that accompany climate change!

In summary, **the evapotranspiration of 2/3 of the rain is essential for plant production and climate.**

## 2. How can we meet the water needs of plants?

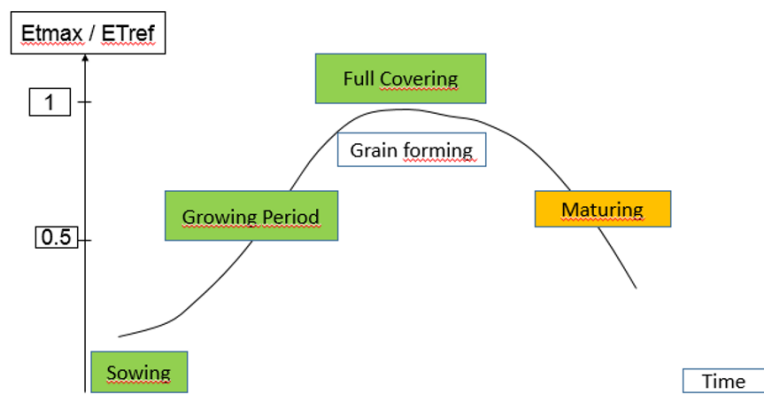


Figure 3. Diagram of the evolution of the maximum evapotranspiration of a crop (relative to the reference evapotranspiration that represents the "climate demand") as a function of the evolution of that crop. [Source: Author's diagram].

Evapotranspiration **depends on atmospheric conditions**. Vegetation loses water in much the same way as laundry is dried on a line: the warmer the weather, the clearer the sky, the stronger the wind and/or the drier the air, the faster it dries. A reference evapotranspiration ( $ET_{ref}$ , formerly called potential) is defined to characterize the climate of a place: it is the atmospheric counterpart of rainfall, which represents the water supply, while  $ET_{ref}$  represents the "atmospheric demand". Formerly measured by lysimeters on grass at the weather park, it is now calculated day after day for each mini-region by the *National*



*Meteorological Office* in the same way as rain is measured (see Focus [Ground weather observations: what is measured and what is done with it?](#)) On a nice summer day, it is about 6 mm/d and drops to 1 or 2 mm/d under overcast sky and humid air.

Relative to this reference, any plant cover will be subject to a demand, called  $ET_{max}$ , which depends on its soil covering (named leaf area index) and stage of development (Figure 3).

For example, in May, the  $ET_{max}$  demand will be high for a covering winter wheat crop, whereas it will be low for a corn crop that is just emerging from the soil. Conversely, in July, the demand will be low on a yellowed wheat field ready to harvest, while it will be high on a fully covering green corn field. [\[4\]](#)

**Facing this demand, what is the supply?** This supply does not correspond to the day's rainfall, but to the accumulation of rainfall from previous periods that has soaked the soil: **supply is the availability of water in the soil.**

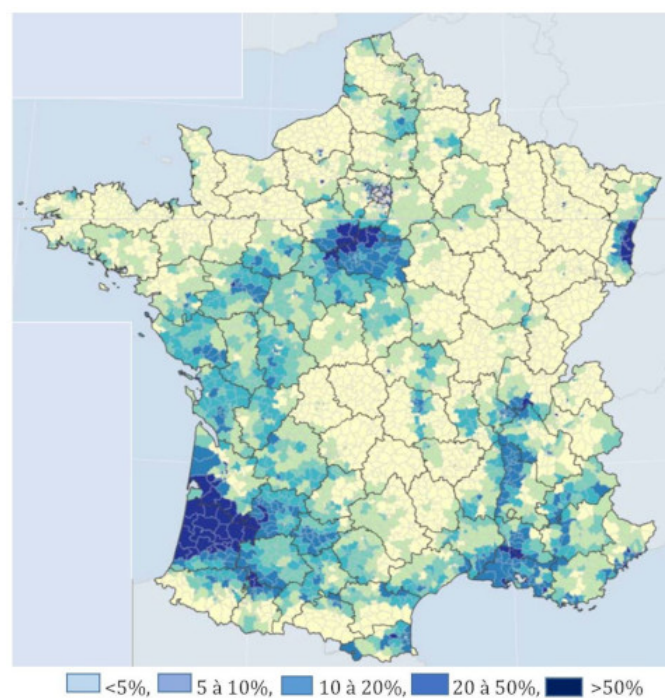
For supply and demand to correspond, there are two possibilities:

**Artificially adding water** if the local climate is not sufficient to provide the soil with enough water: this is the approach that mobilizes part of the "blue" water to irrigate.

**Choosing crops adapted to the local climate** and/or **adopting techniques that make better use of rainwater** in the context of rain-fed agriculture.

## 3. Matching supply to demand: irrigation

### 3.1. Irrigation in France



*Figure 4. Percentage of irrigated area in the utilized agricultural area (UAA) in continental France. [Source: Agreste; 2010 agricultural census data. Service de la statistique et de la prospective. Ministry of Agriculture, France].*

Irrigation is an ancestral technique. It is at the origin of brilliant civilizations: isn't it said that Egypt is a gift from the Nile! Apart from the watering of gardens, it was limited in France to the Mediterranean fringe until the beginning of the 20th century. It experienced a strong growth during the second half of the 20th century in parallel with the rise of corn cultivation in other regions.

The total irrigated surface in France is slightly more than 15,000 km<sup>2</sup>, i.e. the equivalent of 3 departments (excluding the Paris region). It is possible to define 3 zones (Figure 4):

The South-East quarter, with a Mediterranean climate, where the quantity of water supplied is around 400 mm/year;

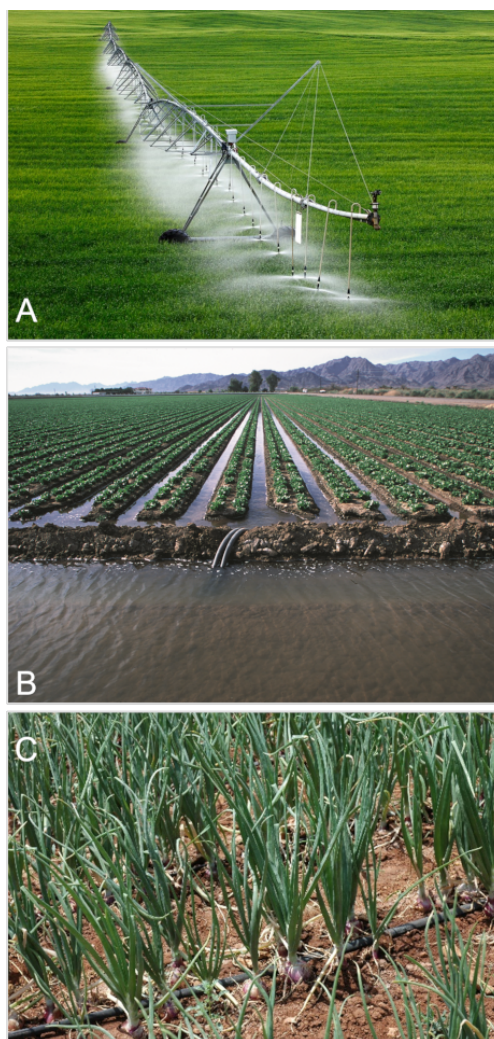
The vast western region, known as the "Atlantic banana", stretching from the Pyrenean foothills to Ile-de-France. It alone represents 4/5 of the irrigated surface and the quantities of water brought in are of the order of 150 to 200 mm/year;

A last residual group, of a more continental nature (Limagne, the Rhone valley and especially the Alsace plain which is the least watered region in France due to the Foehn effect caused by the Vosges)

At the scale of the French territory, with an average quantity of irrigation water increased to 300 mm, we observe that this corresponds to 1% of the annual rain ( $300 \text{ mm} = 1/3$  of the rainfall;  $15,000 \text{ km}^2 = 3\%$  of the metropolitan territory). Thus, unlike more southerly countries, **irrigation in France is not a national problem**. On the other hand, it is a **serious regional problem** in certain parts of the territory, especially in the **southwest**. Where does this come from?

### 3.2. irrigation mode and irrigation logic

There are **three types of irrigation** (Figure 5): sprinkler, furrow and drip.



*Figure 5. Irrigation systems: A, overhead irrigation [Source: © F. Grudet, CC BY-SA 4.0, via Wikimedia Commons]; B, furrow or gravity irrigation [Source: © Jeff Vanuga / Photo courtesy of USDA Natural Resources Conservation Service, via Wikimedia Commons]; C, drip irrigation [Source: © Ramagri, CC BY-SA 4.0, via Wikimedia Commons]*

The first, **sprinkler** irrigation, used by 75% of French irrigators, is practiced on field crops. The second (also called **gravitational**), which used to be characteristic of market gardening, is now being progressively abandoned in favor of the third, **drip** irrigation (or microirrigation), which is also becoming more widespread in orchards. Thus, the decennial agricultural census of the Ministry of Agriculture [\[5\]](#) indicates that the rate of irrigators using drip irrigation has risen from 2% in 1980 to more than 20% in 2010, while drip irrigation has fallen in the same time from more than 30% to less than 5%!

There are two **irrigation logics**: reservoir logic and flow logic. This depends on the size of the aquifers used:

The **reservoir logic** for large aquifers (e.g. the Beauce water table: 9000 km<sup>2</sup>), whose half-decay time is greater than 6 months. This makes it possible to be interested only in the multiannual variation of the water table level by accepting seasonal variations. In this case, it is necessary that the combination of cultivation systems in the region allows this multiannual level not to decrease. This has led to a reduction in the percentage of irrigated corn in Beauce to about 20% of the total area.

The **logic of flow** for small aquifers or the water tables accompanying rivers (basically the whole of France except for the Paris Basin) whose response time is less than 3 months. In this case, it is not only the quantity of water withdrawn that is important, but also the time of year when it is withdrawn, because the flow of rivers at low water must be maintained above a threshold necessary for water quality and other uses.

However, it is during the dry period that spring crops are fully covering and need water. For example, corn [6], a plant of tropical origin that does not consume more water overall than any other, but only develops if the weather is warm. For the regions south of the Loire, it is not only the low water level period but also the time of the year when the arrival of tourists take place and considerably. The problem is particularly acute in the southwest. Indeed, while the South-East has an abundance of exogenous water (Bas-Rhône canal in Languedoc, Canal de Provence), the left bank of the Garonne can only count on the Neste canal (with a flow twice as small) and the region of the former Poitou-Charente does not have any (the Deux-Sèvres department, however northern, and the two Charentes are those where conflicts of use are the most acute)

### 3.3. What crops are irrigated?

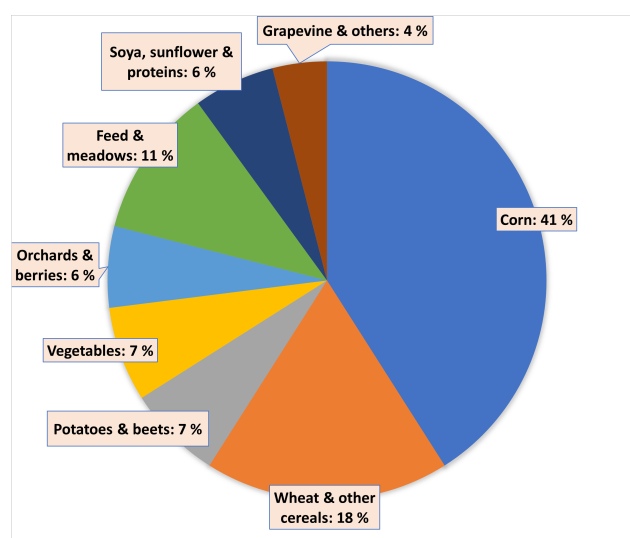


Figure 6. Distribution of irrigated crops in France in 2010 [Source: author's diagram based on 2010 agricultural census data. Service de la statistique et de la prospective. Ministry of Agriculture, France; Agreste].

At the beginning of the 21<sup>st</sup> century, corn, which had progressively colonized the entire territory, took the lion's share: 50% of the entire irrigated surface area for "grain" corn alone [7]. Today, the share of corn is gradually decreasing and is approaching 40% (Figure 6) [8].

Corn does not consume more water than other crops, but unlike crops from Mediterranean or temperate regions (wheat and other winter crops), it has its peak consumption and sensitivity to stress towards the end of July, in the middle of the dry and low water period.

Today, the share of irrigated winter cereals is increasing for reasons of yield regularity and grain quality.

### 3.4. How will the situation evolve with climate change?

From an **agrometeorological** point of view, what is **important** is not rainfall alone but the **potential balance: Rainfall - Atmospheric Demand** ( $ET_{ref}$ )

Figure 7 shows a comparison of this balance (in mm H<sub>2</sub>O) measured at the end of the 20<sup>th</sup> century (left-hand map) with what a climate model ("Arpège" of the French National Meteorological Office) simulated for the near future (2020-2050, center map) and for the end of this 21<sup>st</sup> century (right-hand map) in the "Climator" project [9].

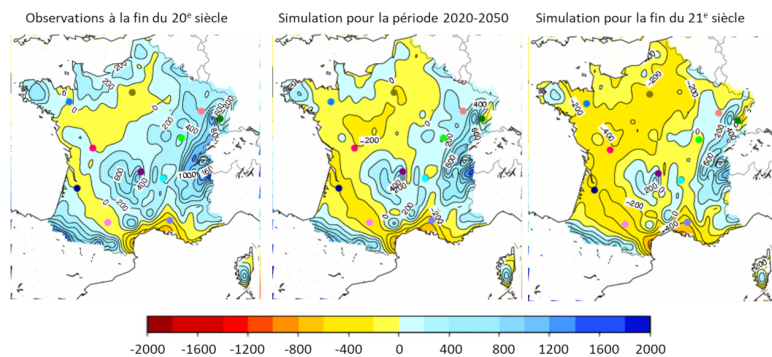


Figure 7. Potential water balance maps of France: Rainfall - Reference Evapotranspiration (Rainfall-ETref). Comparison of observations from the end of the 20<sup>th</sup> century (left) and simulations for the period 2020-2050 (center) and for the end of the 21<sup>st</sup> century (right). Modelling carried out with the Arpège model of the French National Meteorological Office. Values shown are in mm H<sub>2</sub>O. [Source: presentation by the author at the Climator project restitution conference, Versailles, June 2010]

The combination of a decrease in precipitation with an increase in ETref, due to the increase in temperature, causes a sharp decrease in this potential balance, especially in the western part of the territory.

This is likely to exacerbate the problem of shortage of water for irrigation for 3 reasons:

The **decrease in summer rainfall** (higher occurrence of heat wave droughts already observed) will lead to reductions in water stock in the soil during the vegetation period;

This reduction of water in the soil under all vegetation, cultivated or not, will lead to a **decrease of water restitution to the water tables**. This will lead to a decrease in "blue" water, and therefore in the flow of rivers used in summer for irrigation;

Finally, a point rarely mentioned: **the increase in temperature will lengthen the growing season**. This will increase the total water requirements of the late varieties that will be planted or the double cropping that some are considering.

### 3.5. What are the prospects?

There are two ways of dealing with a shortage of irrigation water (intrinsic shortage or shortage linked to competition from other water uses):

**Improving irrigation efficiency** through the choice of efficient equipment and/or a better knowledge of plant needs. These two approaches are well underway. For example, software exists that enables farmers to better distribute water during the growing season. However, this approach will not be sufficient.

**Manage crop rotation in irrigated agriculture** (*i.e.* the choice of crops to be grown) according to water resources. For example, further reduce the area cultivated with corn by developing the cultivation of sorghum, a plant that is a "cousin" of corn but more easily drought tolerant. Thus, sorghum can be satisfied with partial irrigation, in places where corn needs total irrigation.

To go further if the resource becomes scarce, we must address the second aspect, *i.e.* **reconsider irrigation**, by reducing the irrigated areas in favor of rain-fed agriculture adapted to drought.

## 4. Adapting demand to supply: rain-fed agriculture

When rainfall is not abundant, there are two ways to match supply and demand: improve rainfall efficiency and/or reduce water demand.

### 4.1. Improving rainfall efficiency

Only a fraction of rainwater is transpired, *i.e.*, useful for photosynthesis: that which infiltrates into the soil to feed the roots. Increasing this effective rainfall for the farmer is therefore a true question.

Various techniques are used, such as weeding the gardens, which reserves the water in the soil for the cultivated crop. The most widespread technique is a component of conservation agriculture that reduces runoff. Although runoff contributes partially to



aquifers, it has the double disadvantage of reducing infiltration and causing soil erosion. In **conservation agriculture**, it is recommended not to plough and to leave the crop residues on the ground. Various experiments (on millet, maize and sorghum in dry areas) have reported reductions in runoff of more than 50% in the presence of residues, whether or not the soil is ploughed.

## 4.2. Decreased demand in dry periods

### Winter crops

Some crops are problematic because they have their peak consumption in dry periods. As we have seen, corn does not consume more water than any other crop (it takes about 500 mm of water for the cycle of a crop or any other vegetation) but it has its peak water consumption in the middle of summer. Reducing water stress in the dry period means favoring crops that consume most of their water outside this period. These are the so-called "winter crops" that are sown in the fall and harvested in early summer (wheat and most crops in our regions). They develop for temperatures slightly higher than 0°C. Their cycle is regulated on the correspondence in temperate zone between cold season and wet season). Plants of tropical origin (corn, millet, sorghum and other C4 metabolisms) only develop if the temperature is strongly higher than 0°C (about 7 or 8°C), hence the need to sow them only in April or May which leads them to grow strongly in dry periods: it is their thermal need which is at the origin of their hydric problem here.

**It is therefore necessary to favour "winter crop" species which, better adapted to our climate, "dodge" the drought.**

### Dodging

This "**dodging**" can also play a role within the same species. Indeed, most often, drought arrives at the end of the cycle, putting late varieties at risk compared to early varieties. The producer must therefore make a strategic choice at the time of sowing: to grow early varieties with lower potential but not very prone to drought or late varieties with higher production potential but at risk of being penalized by drought.

### Avoidance



*Figure 8. The olive grove of Sfax in Tunisia. [Source: Rights reserved]*

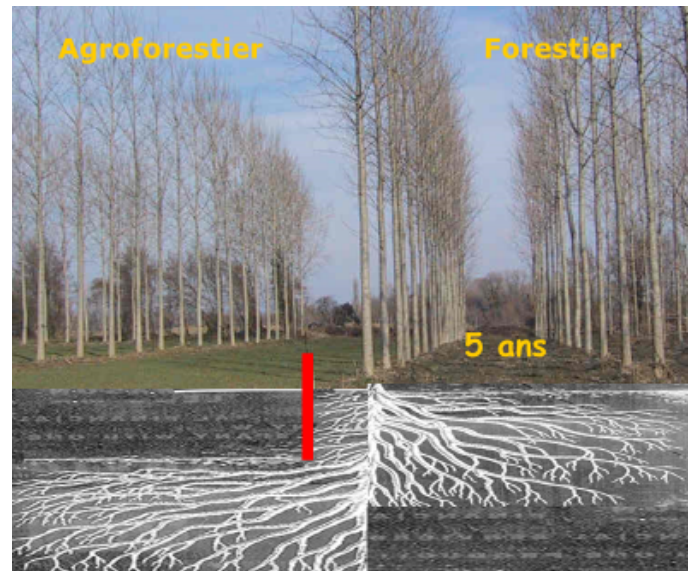
A second means of adjustment is "**avoidance**". While "dodging" plays on time, avoidance plays on space: it involves either decreasing evapotranspiration by reducing the leaf surface or increasing root flow by increasing the rooting depth.

Avoidance can be **natural or agronomic**: for example, a tree subjected to a summer drought loses its leaves before autumn to protect itself (natural avoidance), or a person who buys a potted plant to plant it in the ground "cuts back" the foliage to give the roots time to become functional (agronomic avoidance). Pruning fruit trees is aerial agronomic avoidance.

Avoidance can be **below ground**: sorghum is better adapted to drought than corn, not only because it is not prone to fruit abortion (that is drought tolerance) but also because it is better rooted. An established alfalfa plant with roots up to 2 m deep is



very resistant to drought (natural avoidance).



*Figure 9. Comparison of the rooting of 5-year-old cultivated walnut tree rows. On the right, in traditional forestry (closely spaced rows at intervals in bare soil); on the left in agroforestry (spaced rows cultivated annually with a winter cereal - here wheat). The cereal consumes the water in the first meter of soil, forcing the walnut tree to root better [Source: © Christian Dupraz with permission of the author; see ref. [8]].*

This root avoidance can also be **agronomic**. The spacing of plants in a plantation is a way to allow them to have sufficient water resources in the soil. An extreme example is the "forest" of Sfax in Tunisia (Figure 8), a famous rainfed olive grove of Sfax in Tunisia with an annual rainfall of 250 mm. The olive trees are spaced 24 m apart (3 times more than in northern Tunisia where the rainfall is 500 mm). Roots can be found up to 2 m deep at mid-distance between two trees. After each rare rain, the farmer uses a harrow to eliminate weeds that would consume water entirely dedicated to the olive trees.

### Agroforestry

Another way to increase the rooting of trees can be **agroforestry**. Thus, Dupraz and Gosme (Figure 9) [10] compared the depths of walnut trees cultivated either in traditional orchards or in widely spaced rows, where wheat was grown every year (this is an example of agroforestry where an annual plant - in this case wheat - is associated with a perennial plant - in this case walnut - which will be harvested in 10, 20 or even 30 years). The consumption of water by the wheat annually dries out the 1m deep soil layer leading the 5 year old walnut to install its roots deeper (3 m instead of 1.5 m in orchard) and thus making it more likely to resist occasional drought.

## 5. Messages to remember

**The evapotranspiration of plants** is necessary for their growth and for the mildness of the climate: - It corresponds *roughly* to 2/3 of the yearly rain (it is the "green" water);  
- It corresponds roughly to 2/3 of the rain (this is the "green" water); 1/3 of the rain remains for other uses (this is the "blue" water);

The atmospheric demand for water is about **6 mm/d** in good spring and summer weather;

If rainwater is insufficient, one can either **irrigate** or **adapt** the choice of crops and techniques;

Irrigation concerns **3% of the French territory** and consumes 1% of the rainwater (i.e. 3% of the "blue" water) but locally poses problems of competition for use (especially in the southwest);

**Corn** is the **most irrigated** crop, but its share of total water consumption has begun to decrease;

Corn does not consume more water than other crops but has its **peak consumption in summer**;

Climate change will exacerbate the **pressure on water in the summer** (increased demand for atmospheric water and reduced "blue" water resources);

**Crop diversity** allows for better water management;

**Rainfed agriculture** can be implemented by:

Improving the efficiency of rainfall (conservation agriculture);

Choosing adapted crops (winter crops, early crops, better rooted crops);

Implementing adequate cultivation techniques (plant spacing, pruning);

Encouraging the rooting of trees (agroforestry).

---

## Notes & References

**Cover image.** Olive trees with yellow sky and sun by Vincent Van Gogh (1889), *The Minneapolis Institute of Arts*, public domain. [Source: Vincent van Gogh, Public domain, via Wikimedia Commons]

[1] An exception: cacti and other C.A.M plants that open their stomata at night, storing CO<sub>2</sub> that they will photosynthesize during the day and collecting any dew. These desert plants have a very low annual growth.

[2] François Tardieu, ESCO Sécheresse restitution symposium. Paris October 2006

[3] On the concepts of blue water and green water: <https://appgeodb.nancy.inra.fr/biljou/fr/fiche/eau-verte-eau-bleue>

[4] Note that for all types of cover, the ratio peaks at around 1. This means that, whatever the cover (cereals, grassland, forest), daily evapotranspiration will not exceed the 6 mm dictated by the available radiation energy. Of course, this is true for an extensive canopy and not for a hedge, which captures much more radiation per unit area on the ground.

[5] [Service de la Statistique et de la Prospective du Ministère de l'Agriculture](#)

[6] It is also a C<sub>4</sub> plant which is said to have a better photosynthetic water efficiency than C<sub>3</sub> plants.

[7] Maize is itself 50% irrigated, little in the north and Ile de France, and almost totally irrigated in the Landes.

[8] <https://agreste.agriculture.gouv.fr/agreste-web/download/publication/publie/ChdAgr216/ChdAgr216.pdf>

[9] [Final report of the Climator project \(2007-2010\)](#)

[10] Dupraz C. & Gosme M., Functional plasticity and adaptation to climate change: the case of Mediterranean agroforestry systems - Session of the French Academy of Agriculture, 5 November 2014

---

L'Encyclopédie de l'environnement est publiée par l'Université Grenoble Alpes - [www.univ-grenoble-alpes.fr](http://www.univ-grenoble-alpes.fr)

Pour citer cet article: **Auteur** : ITIER Bernard (2025), Plants water needs, Encyclopédie de l'Environnement, [en ligne ISSN 2555-0950] url : <http://www.encyclopedia-environnement.org/?p=16366>

Les articles de l'Encyclopédie de l'environnement sont mis à disposition selon les termes de la licence Creative Commons

